

# LEGACY II

SEATS 7 51 JETS  
86" x 86" x 37.5"



Barrier free seating allows you to move easily from seat to seat so that you can take advantage of everything that the Legacy open-seated model has to offer. It features a variety of seating elevations with generous jetting throughout and foot jets in all four corner seats. The Legacy II is shown above in White Satin.

## SPECIFICATIONS

### DIMENSIONS

86" x 86" x 37.5"

### WATER CAPACITY

320 gal | 1,211 ltr

### WEIGHT

550 lbs | 249 kg dry  
3,221 lbs | 1,459 kg filled

### WATER FEATURE

Infinity Edge

### WATER CARE/FILTRATION

50 square foot filter  
Mazzei Ozone system

### CONTROL SYSTEM

Balboa BP100  
240v/60amp

### HEATER

5.5 kW Heater

### ENERGY EFFICIENCY

2.0 lb density polyurethane foam  
Temp Shield & Foam Board

### JET PUMPS

2 pumps, 10 total horsepower

### LIGHTING

24 LED points-of-light

## OPTIONS

### UPGRADED CONTROLS

SpaTouch touchscreen/WiFi

### ENTERTAINMENT

Bluetooth Stereo

### ADVANCED JETTING

AirX System

## WARRANTY

### LIMITED LIFETIME

Slip Resistant Shell

### FIVE YEARS

Premium Cabinet

### THREE YEARS

Electrical and Plumbing

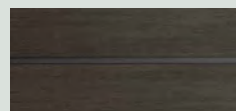
### PREMIUM CABINET COLORS



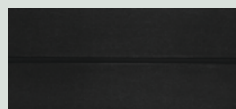
COASTAL GRAY  
with BLACK CORNERS



WALNUT

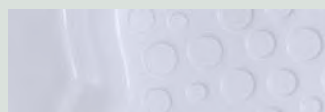


BARNWOOD



BLACK SLATE

### SLIP-RESISTANT SHELL COLORS



WHITE SATIN



SILVER SATIN



OPAL SATIN